

CG70S-NG

Natural Gas CHP Unit

Main configuration and features:

- Highly efficient gas engine
- AC synchronous alternator
- Gas safety train and gas protection device against leakage
- Exhaust and jacket water heat exchanger
- Heating water and jacket water circulation system
- Expansion tank and water jacket heater
- Advanced engine control system, including: ignition system, detonation control system ,speed control system , air/fuel ratio control system and cylinder temp. protection system
- Strict shop test for all CHP unit
- Able to be used directly outdoors with enduring and firm characteristics and design against rain and dust
- Ventilation fan
- Industrial silencer reduces the noise 12-20dB(A)
- Unattached switch cabinet and electric control cabinet
- Multi-functional control system with easy operation
- Data communication interfaces integrated into control system
- Lighting and smoke alarm system
- Monitoring battery voltage and charging automatically
- Auto refilling oil system
- Bus interface for connecting to higher level control unit



Power and efficiency @50Hz

Electric power -kW	70	Electric efficiency	34.3%
Thermal power-kW	109	Heat efficiency	53.4%
Fuel Input -kW	282	Total efficiency	87.7%

Soundproof canopy and control cabinet

Structure Type	Soundproof canopy
Spraying Process	High quality powder coating
Electrical control cabinet	Integrated into canopy,IP54
Noise level@7m, dB(A)	55

Dimension and weight

Dimension (LxWxH) , mm	3500X1200X1850
Weight, kg	3200

Special statement :

- 1、 The technical data are based on natural gas with a lower calorific value of 36MJ/Nm³.The technical data indicated is based on standard conditions according to ISO8528/1, ISO3046/1 and BS5514/1.
- 2、 The technical data is measured in standard conditions:
Absolute atmospheric pressure: 100kPa
Ambient temperature : 25°C
Relative air humidity : 30%
- 3、 Rating adaptation at ambient conditions acc to DIN ISO 3046/1.
The tolerance for the specific fuel consumption is + 5 % at rated output.
- 4、 Dimension and weight above are just for standard product ,and may be subject to change. As this document is used only for presale reference, take the specification supplied by PowerLink before ordering as final.

Fuel and emission

Fuel type	Natural gas
Methane number	MN > 80
Excess air factor (Lambda)	1.6
NOx , mg/Nm ³	<7000mg/Nm ³
CO , mg/Nm ³	<5000mg/Nm ³
HCHO (formaldehyde) , mg/Nm ³	/
NMHC , mg/Nm ³	/
Fuel consumption @100% load, m ³ /h	20
Supply gas pressure range (gage pressure), kPa	10~20

CHP Unit performance data and manufacturing technology

CHP unit model	CG70S-NG	Power and efficiency			
Electric output power (kW)	70	Load	100%	75%	50%
Heat output power (kW)	109	Electric power (kW)	70	53	35
CHP unit electric efficiency	34.3%	Heat power (kW)	138	85	66
CHP unit heat efficiency	53.4%	Energy input (kW)	204	159	122
CHP unit total efficiency	87.7%	Electric efficiency	34.3%	33.3%	28.7%
Overload runtime at 1.1xSe(hour)	1	Heat efficiency	53.4%	53.5%	54.1%
Steady-state voltage deviation	≤±1%	Total efficiency	87.7%	87.0%	82.8%
Transient-state voltage deviation	-15%~20%	Manufacturing technology <ul style="list-style-type: none"> ● Special welded base frame, inner vibration isolators and design for whole lifting ● With high quality paint, enduring brightness as well resistance against abrasion and defacing ● Installation manual, operation and maintenance manual circuit diagram Standards and certificate <ul style="list-style-type: none"> ● ISO3046 , ISO8528 , GB2820 ● BS5000PT99 , AS1359 , IEC34 ● ISO9001:2008 quality system certification 			
Voltage recovery time(s)	≤4				
Voltage unbalance degree	1%				
Steady-state frequency regulation	±0.5%				
Transient -state frequency regulation	±5%				
Frequency recovery time(s)	≤3				
Steady-state frequency band	0.5%				
Recovery time response(s)	0.5				
Telephone interference factor(TIF)	≤50				
Telephone harmonious factor(THF)	≤2% , as per BS4999				

AC alternator performance data

Alternator brand	Leroy-Somer	Voltage	Power
Alternator model	LSA44.3S5	380V	80 kW
Rated output power (kW)	80	400V	80 kW
Power factor	0.8	415V	80 kW
Rated current @ 380V and 100% load (A)	228	440V	72 kW
Excitation system	Brushless		
THF (BS EN60034- 1)	<2%		
Bearing number	1		
Winding material	100% copper		
Wiring connection	Star		
Rotor insulation class	H		
Winding pitch	2/3		
A.V.R. model	R438		
Voltage fluctuation(no load to full load)	± 0.5%		
Housing protection	IP23		
TIF (NEMA MG 1-22)	<50		
Excitation method	PMG		
Rated ambient temperature(°C)	40		
Rated stator temperature rise(°C)	125		

Efficient gas engine

General data

NO. of cylinders		6
Engine type	4-stroke, turbo charged and air to water cooled, lean burn	
Cylinder arrangement		In line
Bore x stroke	mm	108×125
Displacement	L	6.87
Compression ratio		13 : 1
Rated speed	rpm	1500
Rated output power	kW	75
Excess air factor		1.0
Rotation direction	Anti-clockwise viewed on flywheel	
Ignition timing	°BTDC	18

Cooling system

Coolant refilling capacity	L	16
Max. jacket water operating pressure	kPa	300
Min. jacket water circulation flow	L/min	170
Min. jacket water temperature	°C	80
Max. jacket water temperature	°C	88
Max. jacket water difference(inlet-outlet)	K	6
Min. circulation flow LT	L/min	32
Min. circulation flow HT	L/min	39
Coolant type	Mixture of 40% antifreeze and 60% clean fresh water. Lower ambient temperature, higher content of antifreeze.	

Induction/exhaust system

Exhaust flow(wet)	kg/h	272
Combustion air flow	kg/h	257
Exhaust temperature	°C	610
Max. exhaust back pressure	mbar	40
Max. suction restriction	mbar	15

Fuel control system

Gas train, Including:	ball valves
	filters
	gas pressure gauge
	safety solenoid valves
	constant pressure regulator etc
	gas pressure relief valve

Lubrication system

Max. refilling capacity	L	34
Min. refilling capacity	L	24
Max. consumption	kg/h	0.1
Lubrication oil pump	Gear driven	

Energy balance and gas flow

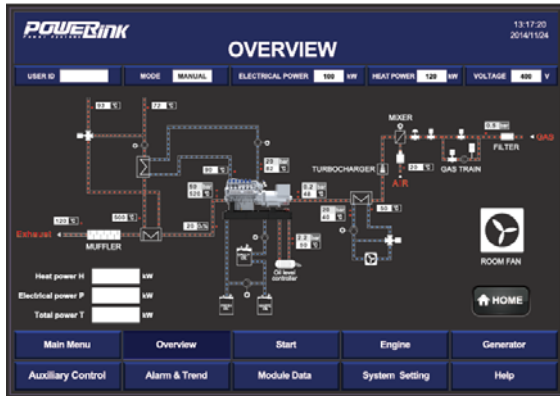
Load	100%	75%	50%
Mechanical power, kW	75	56	38
Coolant heat, kW	63	52	43
Mixture heat HT, kW	/	/	/
Mixture heat LT, kW	/	/	/
Exhaust heat up to 120°C, kW	46	33	23
Max. radiation heat, kW	15	/	/
Energy input, kW	204	159	122
Combustion air flow, kg/h	257	198	151
Fuel consumption, m ³ /h	20	16	12
Exhaust gas flow, kg/h	272	209	160
Exhaust gas temperature, °C	610	580	550

Ignition system

Ignition type	Electronic ignition system
Polarity	Negative earth
Spark plug	Separate for every cylinder

PCC-300 control system

Programmable control system is adopted with touch screen display , and various functions, including: engine protection and control, paralleling between gensets or gensets and grid, and CHP control functions, as well as communication functions, etc.



Main functions

- Engine monitor : coolant, lubrication, exhaust, battery
- Supply gas circuit monitor: pressure, temperature and CH4 content
- Auto paralleling and load share
- Voltage and PF control
- Alternator data : U, I, Hz, kW, kVA, kVAr, PF, kWh, kVAh
- Grid data: U, I, Hz, kW, kVAr, PF
- Modbus communication protocol based on RS232 and RS485 interfaces
- SMS message
- Internet connection and USB 2.0 interface
- 10-inch touch screen
- Internet monitor, auto orientation and cloud communication
- 1000 history events log

Advantages

- Accordant with consumer requirement
- Complete control solution
- Convenient remote monitor and service
- Simplified engine start/stop control
- Enhanced stability and safety

Standard protection functions

- Alternator protection**
- 2xReverse power
 - 2xOverload
 - 4xOvercurrent
 - 1xOvervoltage
 - 1xUndervoltage
 - 1xOver/under frequency
 - 1xUnbalanced current
- Busbar/mains protection**
- 1xOvervoltage
 - 1xUndervoltage
 - 1xOver/under frequency
 - 1xPhase sequence
 - 1xROCOF alarm

Standard control functions

- Power control**
- RPM control(synchronization)
 - Power control(grid connection)
 - Load share(island)
- Lubrication control**
- Auto refilling
 - Warning and monitoring
- Fan control**
- Ventilation for engine room
 - Radiator fan
 - Emergency radiator fan
- Engine protection**
- Various routine and customized protection functions
 - Monitoring
- Voltage control**
- Voltage tracking (synchronization)
 - Voltage control(island)
 - PF control(grid connection)
 - Reactive power share (island)
- Pump control**
- Cooling system
 - Emergency radiator
- Valve control**
- Cooling system
 - Heating system
 - Emergency radiator

Standard configuration

Engine	Alternator	Canopy and base	Electrical cabinet
Gas engine Ignition system Lambda controller Electronic governor actuator Electrical start motor Battery system Auto charging system Detonation control system Cylinder temp. protection system	PMG AC alternator H class insulation IP23 protection AVR voltage regulator PF control	Steel monocoque base frame Engine bracket Vibration isolators Alternator base Soundproof canopy	Air circuit breaker Paralleling control system 10-inch touch screen Communication interfaces Electrical switch cabinet Lighting system Smoke alarm system
Gas supply system	Lubrication system	Standard voltage	Induction/ exhaust system
Gas safety train Gas leakage protection Air/fuel mixer	Oil filter Daily auxiliary oil tank Auto refilling oil system	380/220V 400/230V 415/240V 440/220V	Air filter Exhaust silencer Exhaust bellows Ventilation fan
Heat exchange system	Service and documents		
Exhaust heat exchanger Jacket water circulation pump Jacket water heat exchanger Mixture circulation pump Mixture radiator Jacket water heater Expansion tank, Shut-off valve Three-way auto proportional valve	Tools package Installation and operation manual Maintenance manual Software manual Parts manual	Engine operation and maintenance manual Gas quality specification Control system manual After service guide Standard package	

Optional configuration

Engine	Alternator	Lubrication system
Jacket water heater Emergency radiator	Space heater Treatments against humidity and corrosion	New and used oil tank Automatic oil refilling device
Electrical system	Gas supply system	Service and documents
RCD Lightning protection ATS control cabinet Thermal power gauge Electric power gauge	Gas flow gauge Emergency pressure relief torch Refrigerated gas drier Water separator Gas compressor Gas purification device	Service tools Maintenance and service parts
Voltage	Exhaust system	Exhaust gas using
220V 230V 240V	Three-way catalytic converter	Exhaust gas evaporator LiBr refrigerator

Data is subject to change without prior notice as new products are always developed.
Please contact PowerLink or local agent with any doubts or for more information